

# Parts List

## W&C-TRR Rear Suspension System

For XCMG  
Mixer Trucks



**SUBJECT:** Parts List

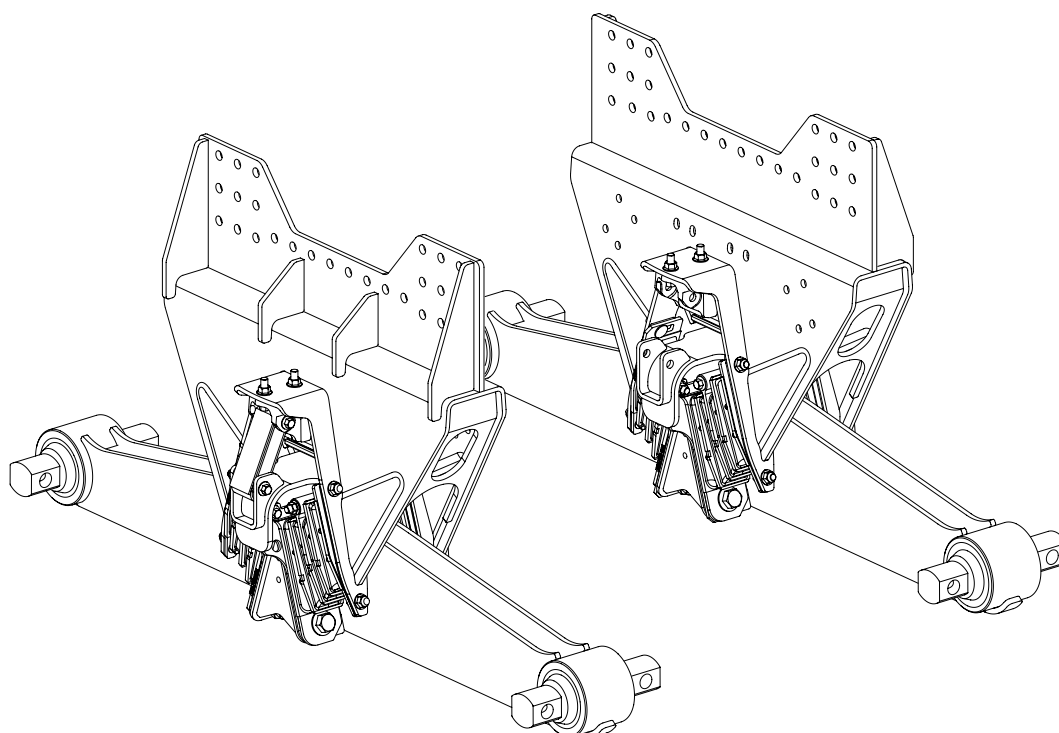
**LIT NO:** W&C281 PL

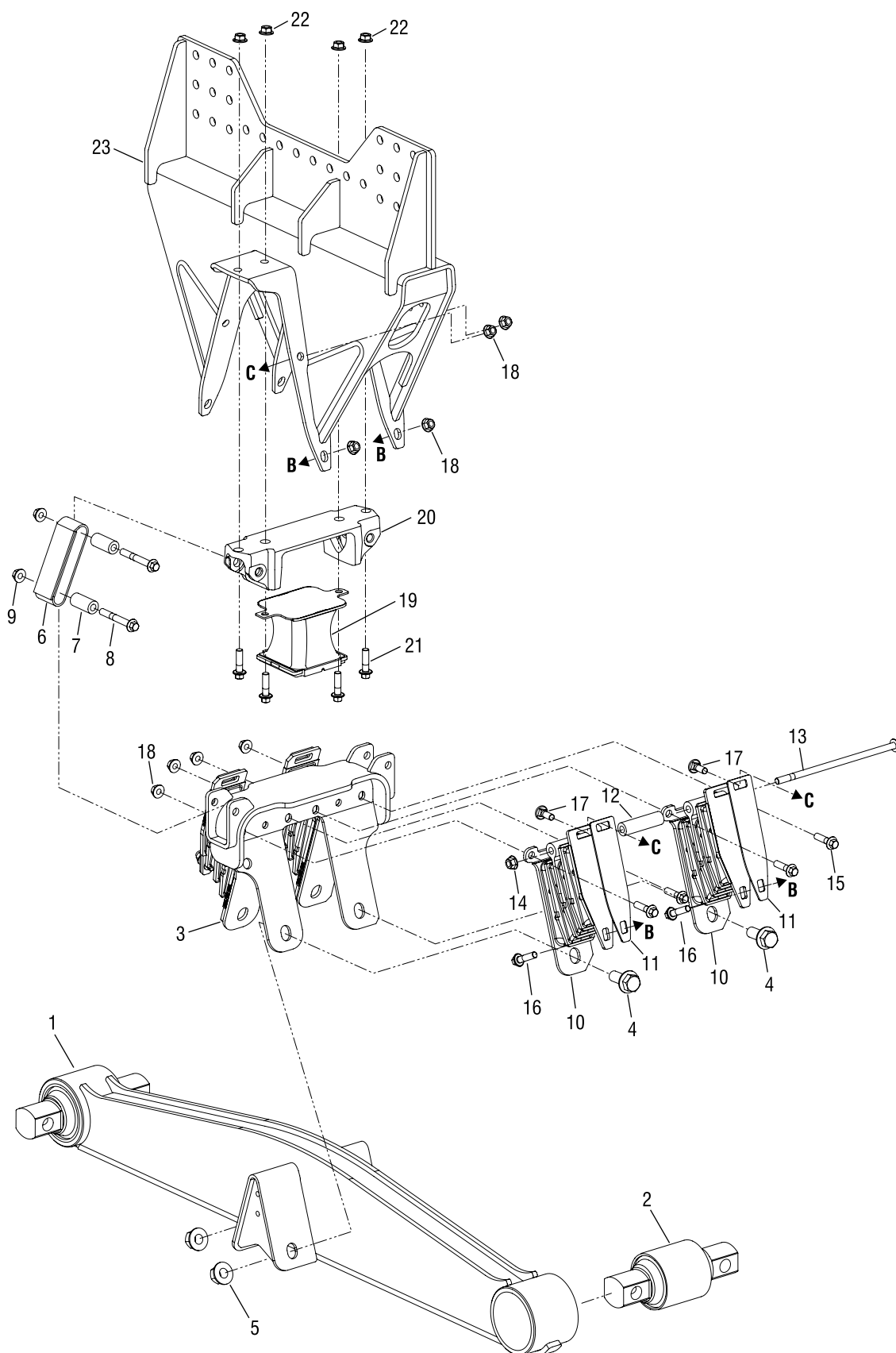
**DATE:** July 2023

**REVISION:** A

### TABLE OF CONTENTS

DESCRIPTION	PAGE
Parts Lists .....	2
Cross Reference .....	3
Service Kits .....	4
Special Tools .....	6





KEY NO.	PART NO.	DESCRIPTION	VEHICLE QTY.	KEY NO.	PART NO.	DESCRIPTION	VEHICLE QTY.
	024462-006	<b>Equalizing Beam Service Kit, One Beam,</b> Includes Key Nos. 1-2, 4-5		10		*Tie-Bar Bolster Spring	8
		*Equalizing Beam Assembly, 1350 mm	2	11		*Bolster Spring Top Plate Spacer	8
		Includes Key Nos. 1-2		12		*Tie-Bar Bolster Spring Spacer	4
1		*Equalizing Beam, 1350 mm	2	13		*M12 x 1.75-6g x 285 mm Flange Bolt	4
2		*Bar Pin End Bushing	4	14		*M12 x 1.75 Flange Locknut	4
	024462-002	<b>Saddle Assembly Service Kit, One Saddle,</b> Includes Key Nos. 3-5, 8, 15, 18		15		*M12 x 1.75-6g x 45 mm Flange Bolt	8
3		*Saddle Assembly	2	16		*M12 x 1.75-6g x 35 mm Flange Bolt	8
4		*M20 x 1.5-6g x 50 mm Flange Bolt	8	17		*M12 x 1.75-6g x 35 mm Round Head Square Neck Bolt	8
5		*M20 x 1.5 Flange Nut	8	18		*M12 x 1.75 Flange Locknut	32
	060961-806	<b>Rebound Strap Service Kit, One Strap,</b> Includes Key Nos. 6-9			024462-005	<b>Progressive Load Spring Service Kit,</b> One Spring, Includes Key Nos. 8,19, 21-22	
6		*Rebound Strap	2	19		*Progressive Load Spring	2
7		*Rebound Spacer	4	20	077234-050	Load Spring Rebound Bracket	2
8		*M12 x 1.75-6g x 90 mm Flange Bolt	4	21		*M12 x 1.75-6g x 45 mm Flange Bolt	8
9		*M12 x 1.75 Flange Locknut	4	22		*M12 x 1.75 Flange Locknut	8
		<b>Tie-Bar Bolster Spring Service Kits</b>		23	077995-551	Frame Hanger	2
	024462-003	Two Bolster Springs, Includes Key Nos. 4-5, 10-18					
	024462-004	Four Bolster Springs, Includes Key Nos. 4-5, 10-18					

## W&C-TRR CROSS REFERENCE

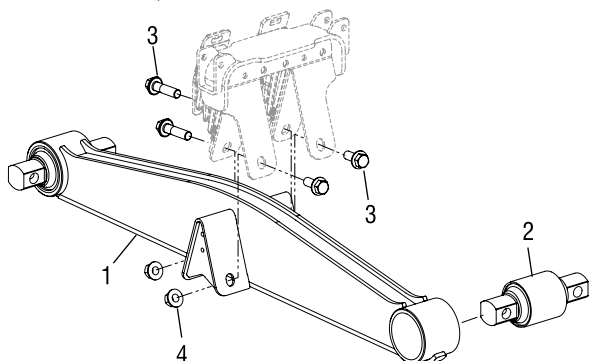
WATSON & CHALIN CHINA PART NO.	XCMG PART NO.	DESCRIPTION
024462-006	459341037	Equalizing Beam Service Kit, One Beam
024462-002	459341038	Saddle Assembly Service Kit, One Saddle
024462-003	459341039	Tie-Bar Bolster Spring Service Kit, Two Bolster Springs
024462-004	459341040	Tie-Bar Bolster Spring Service Kit, Four Bolster Springs
024462-005	459341041	Progressive Load Spring Service Kit, One Spring
060961-806	459341042	Rebound Strap Service Kit, One Strap
077234-050	459341043	Load Spring Rebound Bracket
077995-551	459341044	Frame Hanger

**NOTES:** \* Item included in assembly or service kit only, part not sold separately.

V-torque rods are not supplied by Watson & Chalin China, although it is a required component. Watson & Chalin China is not responsible for components supplied by the vehicle manufacturer. For assistance with inspection, maintenance and rebuild instructions on these components see vehicle manufacturer.

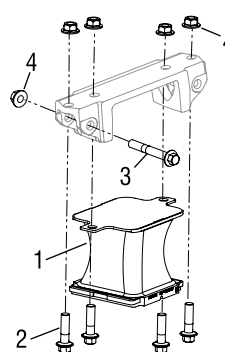
## W&C-TRR Service Kits

**Service Kit No.** | Equalizing Beam  
**024462-006** | One Beam



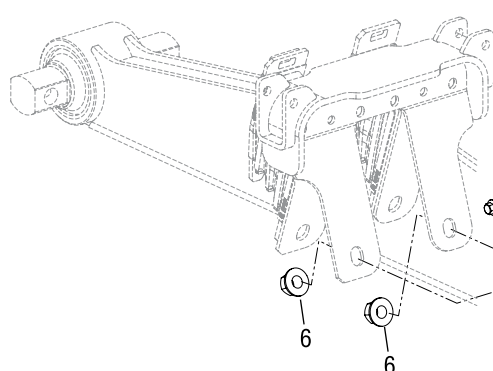
KEY NO.	PART NO.	DESCRIPTION	KIT QTY.
1		*Equalizing Beam, 1350 mm	1
2		*Bar Pin End Bushing	2
3		*M20 x 1.5-6g x 50 mm Flange Bolt	4
4		*M20 x 1.5 Flange Nut	4

**Service Kit No.** | Progressive Load Spring  
**24462-005** | One Side



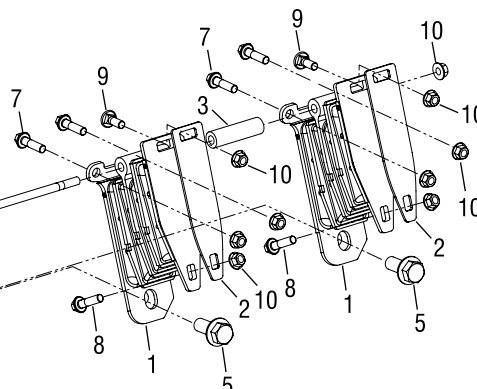
KEY NO.	PART NO.	DESCRIPTION	KIT QTY.
1		*Progressive Load Spring	1
2		*M12 x 1.75-6g x 45 mm Flange Bolt	4
3		*M12 x 1.75-6g x 90 mm Flange Bolt	1
4		*M12 x 1.75 Flange Locknut	5

**Service Kit No.** | Tie-Bar Bolster Spring  
**024462-003** | Two Bolsters



KEY NO.	PART NO.	DESCRIPTION	KIT QTY.
1		*Tie-Bar Bolster Spring	2
2		*Bolster Spring Top Plate Spacer	2
3		*Tie-Bar Bolster Spring Spacer	1
4		*M12 x 1.75-6g x 285 mm Flange Bolt	1
5		*M20 x 1.5-6g x 50 mm Flange Bolt	2
6		*M20 x 1.5 Flange Nut	2
7		*M12 x 1.75-6g x 45 mm Flange Bolt	4
8		*M12 x 1.75-6g x 35 mm Flange Bolt	2
9		*M12 x 1.75-6g x 35 mm Round Head Square Neck Bolt	2
10		*M12 x 1.75 Flange Locknut	9

**Service Kit No.** | Tie-Bar Bolster Spring  
**024462-004** | Four Bolsters

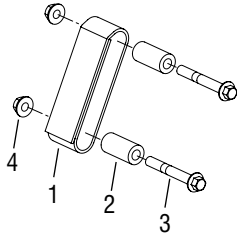


KEY NO.	PART NO.	DESCRIPTION	KIT QTY.
1		*Tie-Bar Bolster Spring	4
2		*Bolster Spring Top Plate Spacer	4
3		*Tie-Bar Bolster Spring Spacer	2
4		*M12 x 1.75-6g x 285 mm Flange Bolt	2
5		*M20 x 1.5-6g x 50 mm Flange Bolt	4
6		*M20 x 1.5 Flange Nut	4
7		*M12 x 1.75-6g x 45 mm Flange Bolt	8
8		*M12 x 1.75-6g x 35 mm Flange Bolt	4
9		*M12 x 1.75-6g x 35 mm Round Head Square Neck Bolt	4
10		*M12 x 1.75 Flange Locknut	18

**NOTE:** \*Item included in assembly or service kit only, part not sold separately.

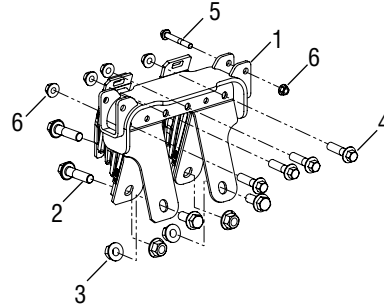
## W&C-TRR Service Kits

**Service Kit No.** | Rebound Strap  
**060961-806** | One Strap



KEY NO.	PART NO.	DESCRIPTION	KIT QTY.
1		*Rebound Strap	1
2		*Rebound Spacer	2
3		*M12 x 1.75-6g x 90 mm Flange Bolt	2
4		*M12 x 1.75 Flange Locknut	2

**Service Kit No.** | Saddle Assembly  
**024462-002** | One Saddle



KEY NO.	PART NO.	DESCRIPTION	KIT QTY.
1		Saddle Assembly	1
2		*M20 x 1.5-6g x 50 mm Flange Bolt	4
3		*M20 x 1.5 Flange Nut	4
4		*M12 x 1.75-6g x 45 mm Flange Bolt	4
5		*M12 x 1.75-6g x 90 mm Flange Bolt	1
6		*M12 x 1.75 Flange Locknut	5

**NOTE:** \*Item included in assembly or service kit only, part not sold separately.



## W&C-TRR Rear Suspension for XCMG

### W&C-TRR Special Tools

#### BAR PIN STYLE END BUSHING TOOLS

##### INSTALLATION TOOLS

**W&C Part No. 066086-103**

**OTC Part No. 1757**

Visit [otctools.com](http://otctools.com)



Use with the beam removed from the truck, and in conjunction with OTC No. 51100 press plate and a 100 tonne hydraulic shop press.

##### REMOVAL TOOLS

**W&C Part No. 066086-104**

**OTC Part No. 206457**

Visit [otctools.com](http://otctools.com)



**W&C Part No. 066086-105**

**OTC Part No. 302030**

Visit [otctools.com](http://otctools.com)



Actual product performance may vary depending upon vehicle configuration, operation, service and other factors.  
All applications must comply with applicable Watson & Chalin China specifications and must be approved by the respective vehicle manufacturer with the vehicle in its original, as-built configuration.  
Contact Watson & Chalin China for additional details regarding specifications, applications, capacities, and operation, service and maintenance instructions.

**Contact Watson & Chalin China at +86 531 8880 9055 for additional information.**



#### **Watson & Chalin Manufacturing Inc.**

No. 1668 North Section of Chunbo Road  
East New Dist of Jinan High- Tech Industrial Development Zone  
Jinan City, Shandong Province, China, 250104  
+86 531 8880 9055 • Fax +86 531 8880 9059

[china.wcsuspensions-intl.com](http://china.wcsuspensions-intl.com)